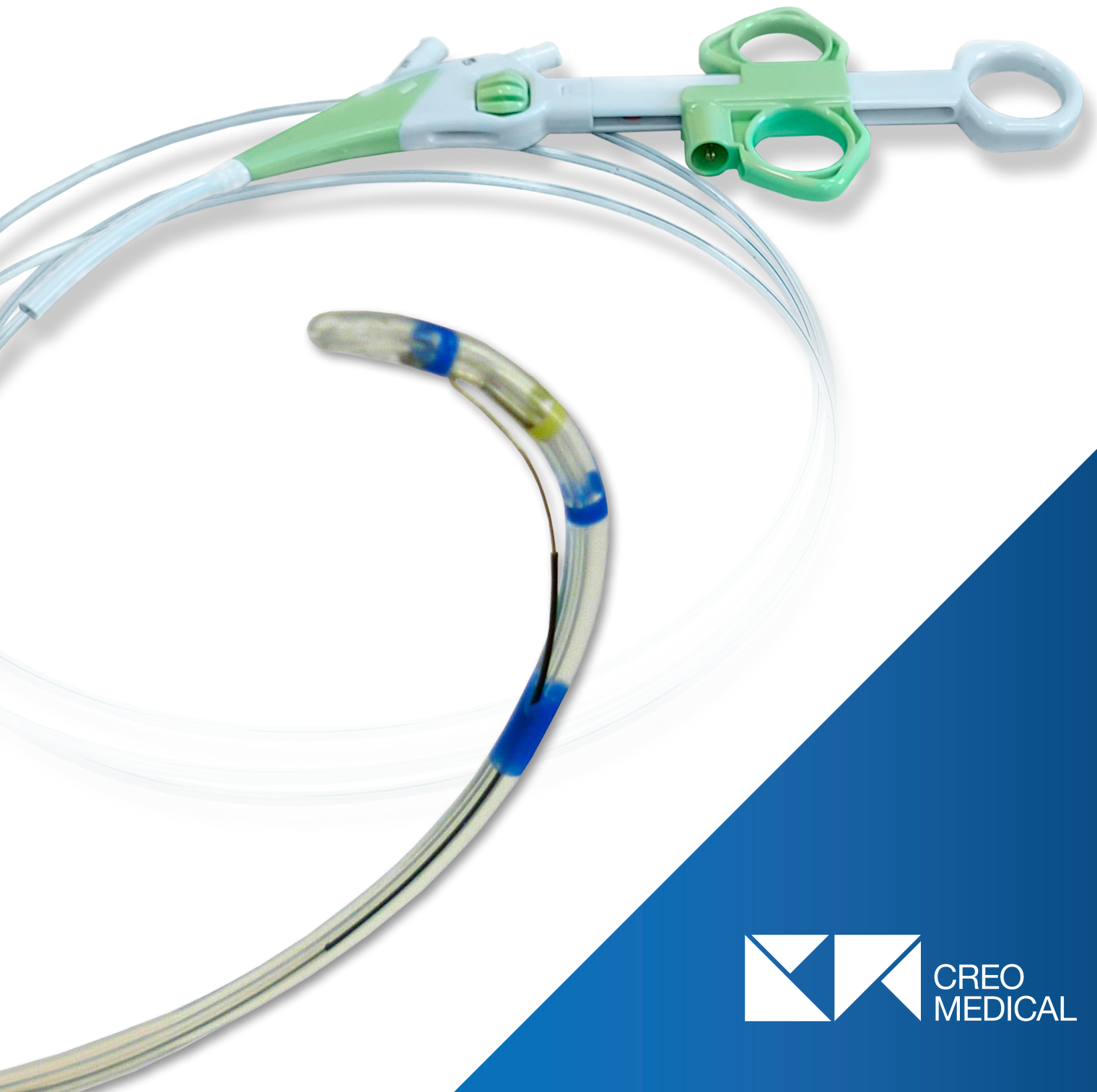


ScopeCut

Single-use Sphincterotome

- ▶ 3 lumens: guide wire - injection - cutting wire.
- ▶ 2.4 mm diameter tapered to 1.6 mm at its tip.
- ▶ Designed for techniques for short wire and long wire.
- ▶ 1:1 rotation with orientation indicator (left-right) on the handle.
- ▶ Available with uninsulated or partially insulated cutting wire.
- ▶ Available with preloaded guide wire.



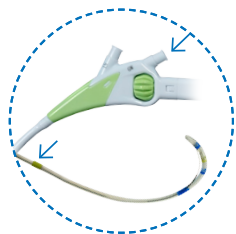
ScopeCut

Single-use Sphincterotome

ScopeCut - Sphincterotome 3-lumen, rotatable, Ø 2.4 mm tapered to 1.6 mm, length 180 cm

Model	Reference	Ø Min. working channel (mm)	length distal end (mm)	Lg cutting wire (mm)	Cutting wire insulation	Guide wire (inch)	Pre-assembled guide	QTY
Needle	NP-055099	≥ 2,8	-	Needle 5 mm	✗	0.025 / 0.035	✗	5
Standard	LWP-05205096	≥ 2,8	5	20	✓	0.025 / 0.035	✗	5
	LWP-05255096	≥ 2,8	5	25	✓	0.025 / 0.035	✗	5
	LWP-05255096-U	≥ 2,8	5	25	✗	0.025 / 0.035	✗	5
	LWP-05305096	≥ 2,8	5	30	✓	0.025 / 0.035	✗	5
	LWP-05305096-U	≥ 2,8	5	30	✗	0.025 / 0.035	✗	5
	SWP-05205093	≥ 3,7	5	20	✓	0.025 / 0.035	✗	5
	SWP-05205093-U	≥ 3,7	5	20	✗	0.025 / 0.035	✗	5
For short guide wire	SWP-05255098	≥ 3,7	5	25	✓	0.025 / 0.035	✗	5
	SWP-05255098-U	≥ 3,7	5	25	✗	0.025 / 0.035	✗	5
	SWP-05305098	≥ 3,7	5	30	✓	0.025 / 0.035	✗	5
	SWP-05305098-U	≥ 3,7	5	30	✗	0.025 / 0.035	✗	5
	SWP-052550910W2526	≥ 3,7	5	25	✓	0.025	✓ GW-25265041	5
With preloaded short guide wire	SWP-052550910W3526	≥ 3,7	5	25	✓	0.035	✓ GW-35265041	5
	SWP-053050910W2526	≥ 3,7	5	30	✓	0.025	✓ GW-25265041	5
	SWP-053050910W3526	≥ 3,7	5	30	✓	0.035	✓ GW-35265041	5

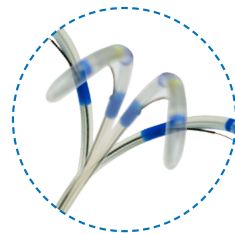
Characteristics



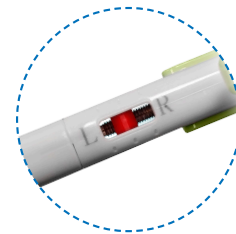
► Compatible with 0.025" and 0.035" short and long guidewire.



► 3 lumens:
 · guide
 · injection
 · cutting wire



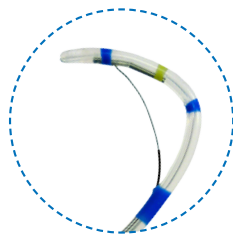
► One-to-one rotation even when the wire is under tension.



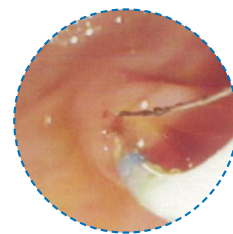
► Left and right rotation indicator.



► Color markers for better visualization.



► Insulated wire to protect the surrounding tissue and the tip of the endoscope.



► Clean cut of the papilla.

Description: ScopeCut Sphincterotome. **Indications:** Canulation of the bile ducts and trans-endoscopic sphincterotomy of the papilla of Vater and/or the sphincter of Oddi. **Class:** IIb. **Notified body:** CE0123. **Manufacturer:** Hangzhou AGS Medtech Co, Ltd. **Proper use:** Before use, carefully read the instructions in the package insert or on the device label. **Version:** ESF_E_6. Rev.06. Date 15-07-2022

Creo Medical authorised local distributor

Creo Medical UK Ltd

Chestnut House, N.Minster Business Pk.

YO26 6QR York, United Kingdom

Email: info.uk@creomedical.com

Tel: +44 (0) 1904 786888

Technical changes and mistakes reserved. Images may show non standard options.

