

# Advanced Energy & Endotherapy



**VHSS**  
VETERANS HEALTHCARE SUPPLY SOLUTIONS

ECAT Contract Number: SPE2D123D0007

Resection  
Dissection  
Myotomy



Anything is Possible  
with the Right Approach



# CONTENTS

---

<b>INTRODUCTION</b>	<b>3</b>
<b>PRODUCT PORTFOLIO</b>	<b>4</b>
<b>ADVANCED ENERGY</b>	<b>6</b>
CROMA ADVANCED ENERGY PLATFORM	7
SPEEDBOAT INJECT	8
SPEEDBOAT ULTRASLIM	9
<b>RESECTION &amp; DISSECTION</b>	<b>10</b>
COLD SNARES	11
HOT & HYBRID SNARES	12
<b>HEMOSTASIS</b>	<b>13</b>
HEMOCLIPS	14
INJECTION NEEDLES	15
<b>RETRIEVAL</b>	<b>16</b>
GRASPING RETRIEVAL FORCEPS	17
BIOPSY FORCEPS	18

Creo Medical provides a complete suite of solutions for clinicians and hospitals targeting critical procedures in the field of gastroenterology for therapeutic endoscopy



# INTRODUCTION

Creo Medical's pioneering products are used worldwide, providing:



## Patients

with improved treatment options, focused on enhancing quality of life



## Healthcare Professionals

with access to advanced technology and techniques



## Hospitals

with optimized patient pathways and efficiency

Creo Medical is transforming lives through the development and delivery of minimally invasive devices, bringing Advanced Energy to the emerging field of therapeutic endoscopy.

With an expanded product portfolio in the field of GI Endoscopy, we can provide a unique partnership with healthcare professionals

## Advanced Energy

for advanced procedures such as Speedboat Submucosal Dissection (SSD) and Per-oral Endoscopic Myotomy (POEM)

## Endotherapeutics

for routine procedures such as polypectomy and Endoscopic Mucosal Resection (EMR), and for supporting advanced procedures, such as endoscopic retrograde cholangiopancreatography (ERCP)



# Advanced Energy

## Product Portfolio

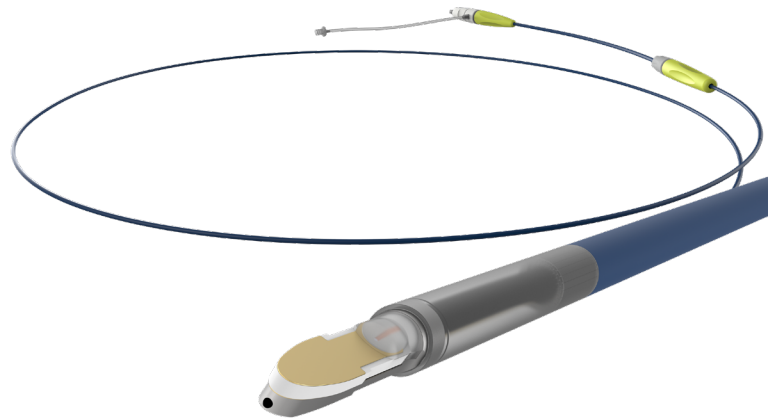
### CROMA Advanced Energy Platform

CROMA delivers Advanced Bipolar RF and controlled Super High Frequency Microwave energy through a single accessory port, providing precise resection, dissection and coagulation capabilities



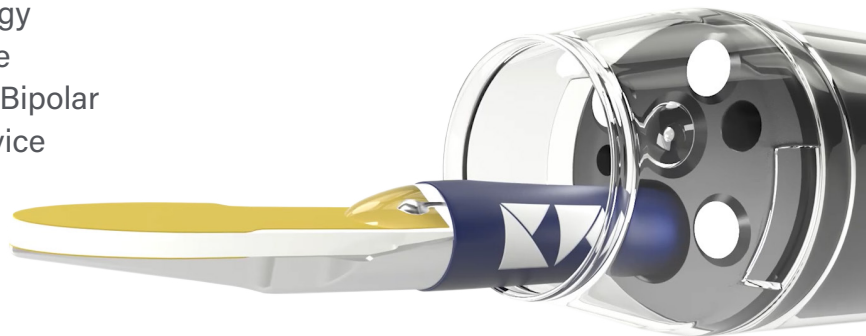
### Speedboat UltraSlim

Creo Medical's slimmest multi-modal device with Advanced Bipolar RF for cutting and Super High Frequency Microwave for coagulation



### Speedboat Inject

Speedboat Inject is the first Advanced Energy multi-modal instrument designed for flexible endoscopy that can deliver both Advanced Bipolar RF and Microwave energy from a single device

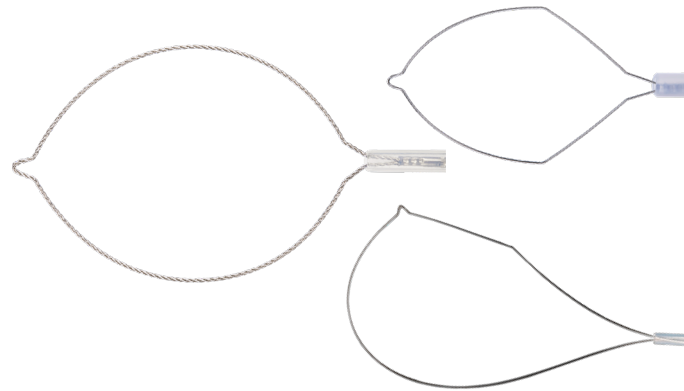


# Endotherapy Accessories

## Product Portfolio

### Hot & Cold Snares

Used for EMR and polypectomy based on lesion size. Cold snares are used for smaller lesions, while hot snares are for larger vascular lesions where bleeding may occur



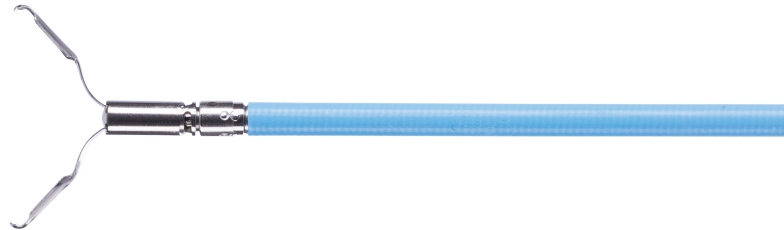
### Biopsy Forceps

Primarily used as a diagnostic device for capturing biopsies, however can also be utilized for removal of very small lesions



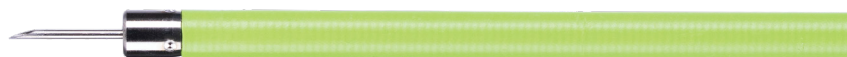
### Hemoclips

Used in therapeutic procedures to stop bleeding, to close perforations or to provide traction



### Injection Needles

Used in therapeutic procedures to inject fluid, to lift the mucosal or submucosal layers, and to inject adrenaline during hemostatic procedures



### Grasping Forceps

Used to remove foreign objects or tissue



# ADVANCED ENERGY

---

**CROMA Advanced Energy Platform**

**Speedboat Inject**

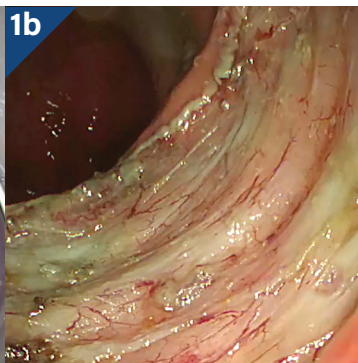
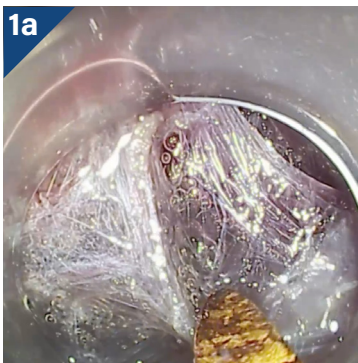
**Speedboat UltraSlim**

## Advanced Energy Generator

The CROMA Advanced Energy Platform precisely controls **Advanced Bipolar RF** and **Super High Frequency (SHF) Microwave** energy to enable a suite of flexible endoscopic devices designed to deliver:



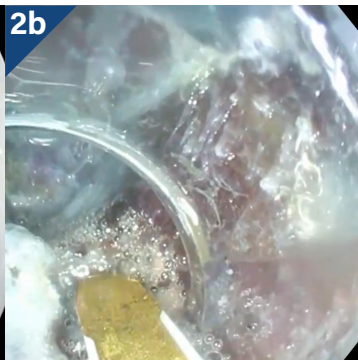
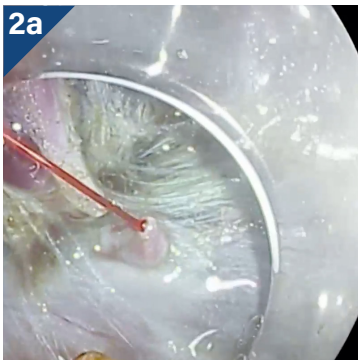
- A unique **usability and safety profile**<sup>1-6</sup>
  - Optimal **tissue effect**<sup>1-6</sup>
- Improved **clinical and economic outcomes**<sup>6</sup>
- **Expanded capabilities** in therapeutic endoscopy



### Advanced Bipolar RF

Enables a smooth cut with clean margins and minimal bleeding<sup>1</sup>

- Closed-loop technology & proprietary waveform
- Lower voltage than standard monopolar
- Focused energy, adapted based on tissue response



### SHF Microwave

Enables on-demand, reproducible effects for both ablations and hemostasis<sup>1</sup>

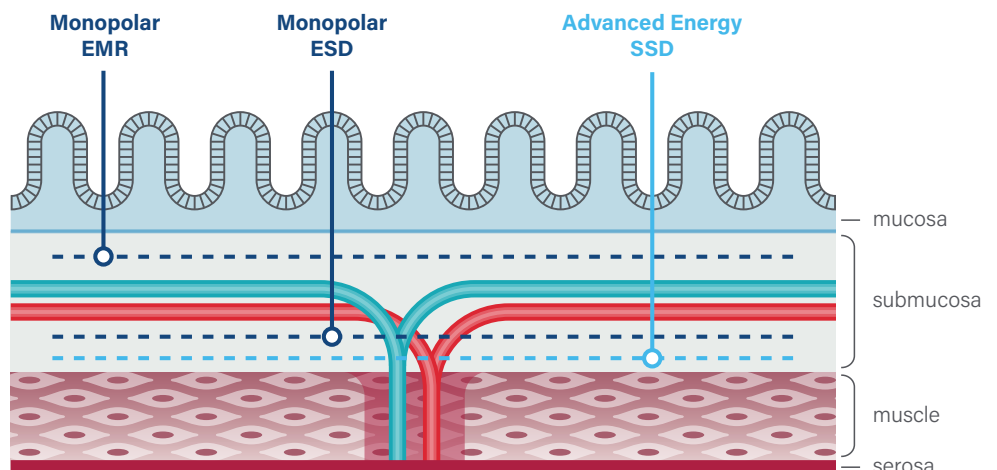
- Super high frequency (5.8 GHz)
- Precise control of the thermal energy and depth of penetration

#### Images (top)

- 1a.** Cut fibrotic tissue
- 1b.** Uncharred margins and muscle 'bed'
- 2a.** Active bleeding
- 2b.** Large vessels

#### Image (right)

GI tract layers



# Speedboat Inject

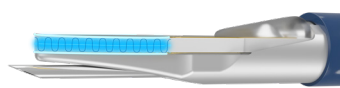
## Advanced Energy Multi-modal Device

Speedboat Inject with an integrated injection needle is an advanced energy multi-modal instrument designed for flexible endoscopy that can deliver both advanced bipolar RF and 5.8GHz Super High Frequency Microwave energy.



### Protective hull designed for safety

Protects the muscle bed from unwanted thermal injury by maintaining a consistent distance from the energy source, allowing cutting close to the muscle bed.



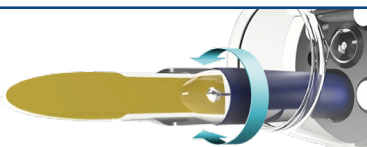
### Precise advanced bipolar RF cutting

Blade design controls the depth of penetration and provides a focused pathway of energy delivery at lower voltage <460 V. Adaptive waveform automatically adjusts parameters to tissues and balances coagulation during cutting to minimize bleeding.



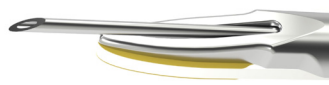
### On-demand, controlled microwave coagulation

Microwave energy distributes heat evenly across the treatment area, coagulating the area and constricting the source of bleeds. 5.8 GHz enables controlled depth of penetration not impacted by tissue resistance, designed to minimize the risk of perforations and charring.



### 1-to-1 rotational feel designed for usability

Torque Rotation Technology™ for accurate control, ensures the tip can be positioned to match the contour of the muscle bed at all stages of submucosal dissection.



### Integrated injection needle for versatility

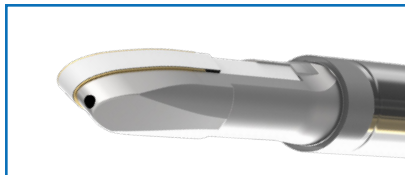
On-demand submucosal lift using a 26-gauge extendable needle, eliminating unnecessary instrument exchanges.



# Speedboat UltraSlim

## Our Slimmest Advanced Energy Device

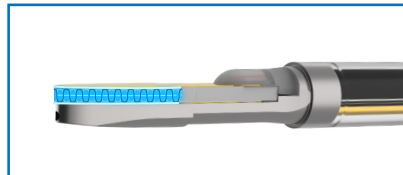
Speedboat UltraSlim is our slimmest Advanced Energy multi-modal instrument designed for flexible endoscopy that can deliver both advanced bipolar RF and 5.8GHz Super High Frequency Microwave energy from a single device.



### Integrated lifting system & Protective Hull

Compatible with both endoscopic pumps and syringes, the integrated system provides rapid tissue lift during dissections.

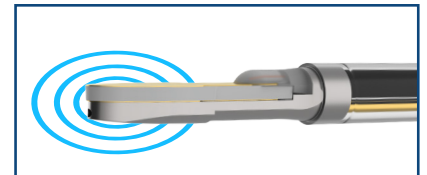
Protects the muscle bed from unwanted thermal injury by maintaining a constant distance from the energy source, allowing cutting close to the muscle bed.



### Precise Advanced Bipolar RF cutting

Blade design controls the depth of penetration and provides a focused pathway of energy delivery at lower voltage <460 V.

Adjusts voltage/current based on tissue impedance automatically to maintain power density for a smooth, high quality and precise cut.



### On-demand, controlled microwave coagulation

SHF Microwave energy distributes heat evenly across the treatment area, coagulating the area and constricting the source of bleeds.

5.8 GHz enables controlled depth of penetration not impacted by tissue resistance, designed to minimize the risk of perforations and charring.<sup>1</sup>

## Multi-modal device



### Benefits of Speedboat UltraSlim

- ✓ Improved access to the GI tract
- ✓ Integrated torquer for enhanced control
- ✓ Functions in tortuous and challenging scope positions including retroflexion
- ✓ Compatible with all routine and therapeutic endoscopes
- ✓ Our fastest microwave coagulation yet

# RESECTION & DISSECTION

---

**Cold Snares**

**Hot & Hybrid Snares**

# ScopeSnare Cold

## Polypectomy Snares

### Key Characteristics

Used endoscopically in the removal of diminutive, sessile and pedunculated polyps, and tissue from within the GI tract

**Sterile, disposable, and single-use**

**Rotatable model:** designed to provide ease of use and accuracy of placement

**Smart handle design:** produces a responsive and precise control for full rotation of 360°, 1:1 rotation in either direction and a shortened throw for controlled actuation

**A cutting wire with a diameter of 0.24 mm designed for a clean resection**

Rotatable models

Various shapes available

Optimized cutting wire diameter

Discover more:



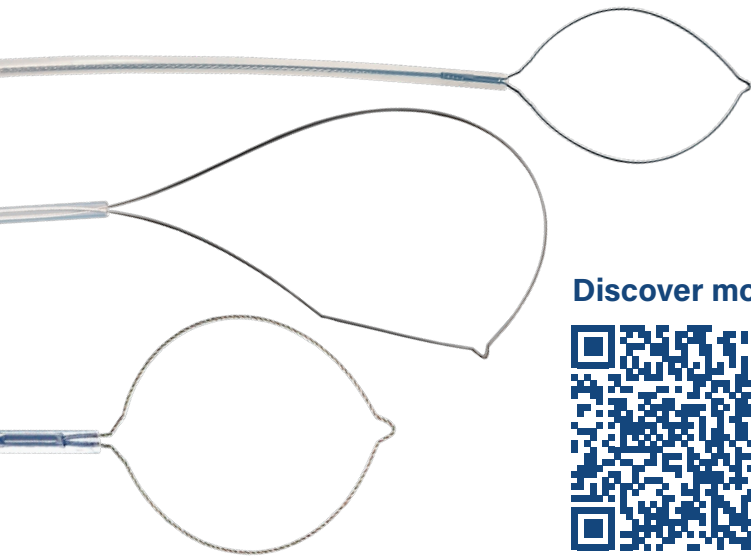
### ScopeSnare COLD | Disposable Polypectomy Snare (Cold)

Part Number	Catheter		Snare				Box QTY
	Ø (mm)	Length (mm)	Snare Ø (mm)	Ø Cutting Wire (mm)	Shape	Rotatable	
CPS-2410235335	2.4	2300	10	0.24	Oval	✓	10
CPS-2410235336	2.4	2300	10	0.24	Shield	✓	10
CPS-2415235335	2.4	2300	15	0.24	Oval	✓	10
CPS-2415235336	2.4	2300	15	0.24	Shield	✓	10

# ScopeSnare

## Polypectomy Snares

Portfolio of energy-based snares with different diameters and shapes to match the mode of resection



Discover more:



### Key Characteristics

**Sterile, disposable, and single-use**

**Rotatable model:** designed to provide ease of use and accuracy of placement

**Smart handle design:** produces a responsive and precise control for full rotation of 360°, 1:1 rotation in either direction and a shortened throw for controlled actuation

**Braided model:** designed to increase friction on the mucosa to prevent slippage

ScopeSnare   Disposable Polypectomy Snare								
Part Number	Catheter			Snare				Box QTY
	Ø (mm)	Length (mm)	Compatibility	Snare Ø (mm)	Ø Cutting Wire (mm)	Shape	Rotatable	
HPS-2410235072	2.4	2300	Hybrid	10	0.30	Shield		10
HPS-2415235072	2.4	2300	Hybrid	15	0.30	Shield		10
HPS-2415235071	2.4	2300	Hybrid	10	0.30	Oval		10
HPS-2410235071	2.4	2300	Hybrid	15	0.30	Oval		10
HPS-2425235071	2.4	2300	Hot	25	0.41	Oval		10
HPS-2415235079	2.4	2300	Hot	15	0.30	Crescent		10
HPS-2425235079	2.4	2300	Hot	25	0.30	Crescent		10
HPS-2410235075	2.4	2300	Hybrid	10	0.30	Oval	✓	10
HPS-2415235075	2.4	2300	Hybrid	15	0.30	Oval	✓	10
HPS-2425235075	2.4	2300	Hot	25	0.41	Oval	✓	10
HPS-2432235075	2.4	2300	Hot	32	0.41	Oval	✓	10
HPS-2410235076	2.4	2300	Hybrid	10	0.30	Shield	✓	10
HPS-2415235076	2.4	2300	Hybrid	15	0.30	Shield	✓	10
HPS-2425235076	2.4	2300	Hot	25	0.41	Diamond	✓	10
HPS-2415235078	2.4	2300	Hot	15	0.43	Round	✓	10
HPS-2425235078	2.4	2300	Hot	25	0.43	Round	✓	10



# HEMOSTASIS

---

**Hemoclips**

**Injection Needles**

# ScopeClip

## Hemoclip

Designed to optimize usability and performance

Repositionable

Rotatable

Removable



Rotatable

### Key Characteristics

Indicated for clip placement in the digestive tract for the purpose of mechanical pressure treatment of bleeding of small arteries and pulsation

**Rotatable:** designed for better maneuverability and positioning

**Short distal end:** to facilitate the progression of the clip through the working channel

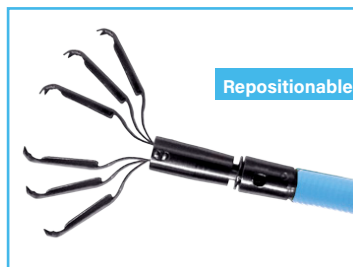
**Repositionable:** ability to open and close the clamp for precise positioning

**Removable:** if necessary, the clip can be reopened and removed with a polypectomy snare

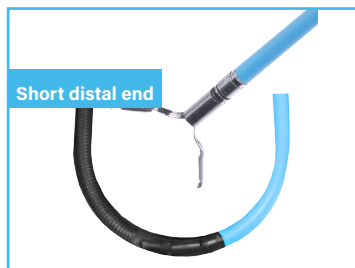
**Coated:** for less friction and to prevent kinking



Strong grip



Repositionable



Short distal end



Removable

Discover more:



### ScopeClip - Single-use Hemoclip

Reference	Catheter				Clip			Box QTY
	Ø (mm)	Length (mm)	Span (mm)	Angle (°)	Rotatable	Repositionable	Removable	
HC-23091355108	2.6	2300	9	135	✓	✓	✓	10
HC-23111355104	2.6	2300	11	135	✓	✓	✓	10
HC-231313551018	2.6	2300	13	135	✓	✓	✓	10
HC-231613551044	2.6	2300	16	135	✓	✓	✓	10

# ScopeInject

## Injection Needles

### Key Characteristics

Intended for endoscopic injection into GI mucosa

#### Scope Inject:

##### Ergonomic handle:

designed to be operated with one hand

**Designed for safety:** keeps the needle in "extended" and "retracted" position

**Triple beveled needle:** designed for safe and precise punctures

#### Additional features of ScopeInject Plus:

**Coated:** intended to cause less friction and to prevent kinking

**Metal end:** designed for easy deployment through the channel

Designed for usability with configurations best suited for the clinical need

Sharp needle, strong puncture force  
Variable gauge and needle lengths  
Sterile and single use



#### ScopeInject | Disposable Injection Needle

Part Number	Catheter		Needle		Box QTY
	Ø (mm)	Length (mm)	Ø Gauge	Length (mm)	
IN-242323045311	2.4	2300	23	4	10
IN-242323065311	2.4	2300	23	6	10
IN-242325045311	2.4	2300	25	4	10
IN-242325065311	2.4	2300	25	6	10

#### ScopeInject Plus | Disposable Injection Needle

Part Number	Catheter		Needle		Box QTY
	Ø (mm)	Length (mm)	Ø Gauge	Length (mm)	
IN-2423-2304M-5313	2.4	2300	23	4	10
IN-2423-2306M-5313	2.4	2300	23	6	10
IN-2423-2504M-5313	2.4	2300	25	4	10
IN-2423-2506M-5313	2.4	2300	25	6	10

Discover more:



# RETRIEVAL

---

**Biopsy Forceps**

**Grasping Retrieval Forceps**



# ScopeGrasp

## Disposable Grasping Forceps

### Key Characteristics

Used to enter human respiratory tract, stomach or GI tract through flexible endoscopy to grasp tissue, stones, stents or foreign bodies

**Four-link design:**  
for strong gripping force

**Serrated tooth design:** a deploy and-grasp action, with a rat tooth design and serrated jaw to secure small objects

**Pantograph type opening mechanism:**  
designed to allow extraction even in angulated endoscopes

**Rotatable model:** to facilitate the positioning of the forceps on the foreign body to be extracted

**Coated:** for less friction and to prevent kinking

Different shapes and consistencies, for digestive and bronchial endoscopy

Four-link design

Three jaw types available

Rotatable model available

Sterile and single use



ScopeGrasp   Disposable Grasping Forceps						
Part Number	Catheter		Jaws			Box QTY
	Ø (mm)	Length (mm)	Type	Span (mm)	Rotatable	
GF-18075032	1.8	700	Rat Tooth	4.6		10
GF-18165032	1.8	1600	Rat Tooth	4.6		10
GF-18235032	1.8	2300	Rat Tooth	4.6		10
GF-23235033	2.3	2300	Alligator / Rat Tooth	8.3		10
GF-23235039	2.3	2300	Alligator / Rat Tooth	8.3	✓	5
GF-18125033	1.8	1200	Alligator / Rat Tooth	8.5		10
GF-18185033	1.8	1800	Alligator / Rat Tooth	8.5		10
GF-23235031	2.3	2300	Alligator	8.7		10
GF-232350310	2.3	2300	Alligator / Rat Tooth	15		10

Discover more:



# ScopeBite (Standard)

## Digestive Biopsy Forceps

A diverse portfolio to optimize the tissue sample, even in hard-to-reach areas

Coated

Smooth/Toothed cup design

Tooth and spiked jaw options

### Key Characteristics

Used to enter human GI tract via flexible endoscope to obtain tissue samples

**Coated:** for less friction and to prevent kinking

**Toothed:** to give greater security in helping to secure the tissue sample

**Spiked:** to provide a stronger hold to help secure the tissue sample



Discover more:



### ScopeBite - Biopsy forceps (standard model)

Reference	Catheter			Jaws			Box QTY	
	Ø (mm)	Length (mm)	Markers	Jaw Opening (mm)	Spiked	Jaws		
GBF-18165011	1.8	1600	Yes	5		Smooth	2.1	10
GBF-181650123	1.8	1600	Yes	5.6		Toothed	2.6	10
GBF-23165013	2.3	1600	Yes	6.8		Toothed	5.9	10
GBF-23235013	2.3	2300	Yes	6.8		Toothed	5.9	10
GBF-23165014	2.3	1600	Yes	6.8	✓	Toothed	5.9	10
GBF-23235014	2.3	2300	Yes	6.8	✓	Toothed	5.9	10
GBF-23165011	2.3	1600	Yes	7		Smooth	5.9	10
GBF-23235011	2.3	2300	Yes	7		Smooth	5.9	10
GBF-23165012	2.3	1600	Yes	7	✓	Smooth	5.9	10
GBF-23235012	2.3	2300	Yes	7	✓	Smooth	5.9	10

# ScopeBite (Large Capacity)

## Digestive Biopsy Forceps

### Key Characteristics

Used to enter human GI tract via flexible endoscope to obtain tissue samples

**Swinging Cup:** vertical biopsy can be performed for esophagus, greater curvature of the stomach and other areas

**Large capacity cup with holes:** to increase sampling volume

**Catheter markers:** provides distinct catheter position markers for visibility during insertion and withdrawal

A diverse portfolio to optimize the tissue sample, even in hard-to-reach areas

Coated

Large-capacity model with pivoting jaw

Swinging cup

Tooth and spiked jaw options



Discover more:



### ScopeBite - Biopsy forceps with pivoting jaws (large capacity)

Reference	Catheter			Jaws				Withdrawal Volume (mm <sup>3</sup> )	Box QTY
	Ø (mm)	Length (mm)	Markers	Jaw Opening (mm)	Spiked	Jaws	Large Capacity		
GBF-18165021	1.8	160	Yes	5.6		Smooth		2.6	10
GBF-18165023	1.8	160	Yes	5.6		Toothed	✓	2.6	10
GBF-23165023	2.3	160	Yes	8		Toothed		7.9	10
GBF-23235023	2.3	230	Yes	8		Toothed	✓	7.9	10
GBF-23165024	2.3	160	Yes	8	✓	Toothed	✓	7.9	10
GBF-23235024	2.3	230	Yes	8	✓	Toothed	✓	7.9	10
GBF-23165021	2.3	160	Yes	8		Smooth	✓	7.9	10
GBF-23235021	2.3	230	Yes	8		Smooth	✓	7.9	10
GBF-23165022	2.3	160	Yes	8	✓	Smooth	✓	7.9	10
GBF-23235022	2.3	230	Yes	8	✓	Smooth	✓	7.9	10

## References

1. Data on file
2. Microwave coagulation of blood vessels during advanced colonoscopic polypectomy: first results in humans. Zacharias P. Tsiamoulos et al. published in United European Gastroenterology Journal; 2016; 2 (Supplement 1). <https://www.ueg.eu/education/document/microwave-coagulation-of-bloodvessels-during-advanced-colonoscopy-polypectomy-first-results-in-humans/129209>
3. A new approach to endoscopic submucosal tunneling dissection: the "Speedboat-RS2" device. Zacharias P. Tsiamoulos et al. published in Endoscopy. <https://www.thieme-connect.de/products/ejournals/html/10.1055/a-0875-3352>
4. Endoscopic submucosal tunneling dissection: use of a novel bipolar radiofrequency and microwave-powered device for colorectal endoscopic submucosal dissection. Thomas R. McCarty, Hiroyuki Aihara. Published in Video GIE, official video journal of the American Society of Gastrointestinal Endoscopy. [https://www.videogie.org/article/S2468-4481\(20\)30090-4/fulltext](https://www.videogie.org/article/S2468-4481(20)30090-4/fulltext)
5. Tsiamoulos et al. First results using Speedboat Tunneling technique in colorectal submucosal dissection – clinical outcomes and procedure time prediction models. Poster presented at UEG 2020. <https://ueg.eu/library/first-results-using-speedboat-tunneling-technique-in-colorectal-submucosal-dissection-clinical-outcomes-and-procedure-time-prediction-models/240928>
6. Cost-effectiveness analysis of Speedboat submucosal dissection in the management of large non-pedunculated colorectal polyps, based on 50 patients. Authors: Amir Ansari-pour, Mehdi Javanbakht, Adam Reynolds, Zacharias Tsiamoulos. Data on file.



2615 Port Industrial Dr. #405 Jacksonville,  
FL 32226

Phone: (904) 638-5519  
[customerservice@vhss1.com](mailto:customerservice@vhss1.com)

UEI Number: TLTXKMLQEYU9\*

CAGE Number: 65HC5

TIN Number: 27-3260119

ECAT Contract Number: SPE2D123D0007

### Creo Medical Ltd.

Unit 2, Creo House  
Beaufort Park Way  
Chepstow NP16 5UH, UK  
+44 (0) 1291 637 300  
[customerservice@creomedical.com](mailto:customerservice@creomedical.com)

### Creo Medical Inc.

100 Reserve Road  
Suite B400  
Danbury, CT 06810, USA  
+1 866-226-1170  
[UScustomerservice@creomedical.com](mailto:UScustomerservice@creomedical.com)

### Creo Medical Pte Ltd.

60 Paya Lebar Road, #09  
01/02/03/04 Paya Lebar Square  
Singapore  
409051

[showcase/creo-endoscopy](#)

[company/creo-medical](#)

[@CreoMedical](#)

[@CreoEndoscopy](#)

Technical changes and mistakes reserved. Images may show non standard options.

Creo Medical, the CM logo, Kamaptive and Speedboat are trademarks of Creo Medical Limited. Certain names and marks are registered in the UK and other territories. All cited trademarks are the property of their respective owners. © 2024 Creo Medical. All rights reserved.

MKT-GEN-004 | 2024-March

